



AMBIA FILMS 9585020021

LILY & LALI®

GULSPRIDE
A PRODUCT OF **frond** GROUP

Chikan Kari

Vol-2



LILY & LALI®
GULSPRIDE
A PRODUCT OF **frond** GROUP

Corporate office:

A-TOWER, SHOP NO 16, GROUND FLOOR, LANDMARK EMPIRES, SAROLI, SURAT, INDIA-395010

PH: 0281 2845451 - 0281 2843451

Web: www.lilylali.com, Email: info@lilylali.com

FOLLOW US



Complimentary Copy Not For Sale







LILY&LALI®
GULS PRIDE
A PRODUCT OF KIRAN'S GROUP





CK - 13902



LILY&LALI[®]
GULS PRIDE
A PRODUCT OF **WIONA** GROUP





LILY & LALI[®]
CLASSIC WEAR
A PRODUCT OF FORTIS GROUP

GO FORTH & BE FABULOUS!







CK - 13903 ●

LILY&LALI®
GULS PRIDE
A PRODUCT OF Friends GROUP



LILY & LALI
A PRODUCT OF FIONA CREOP



CK - 13904





CK - 13901



CK - 13902



CK - 13903



CK - 13904



CK - 13905



CK - 13906









LILY & LALI[®]
CLASSIC WEAR
A PRODUCT OF FORTIS GROUP

GO FORTH & BE FABULOUS!



LILY&LALI®
GULS PRIDE
A PRODUCT OF KIRAN'S GROUP



DK - 13902



LILY&LALI®
GULS PRIDE
A PRODUCT OF SION'S GROUP





LILY&LALI[®]

WOMEN'S WEAR

A PRODUCT OF SIFORA GROUP

FASHION SAGA





LILY & LALI

A PRODUCT OF MIONA GROUP

DEFENCE IS FOR THE DEFEATED



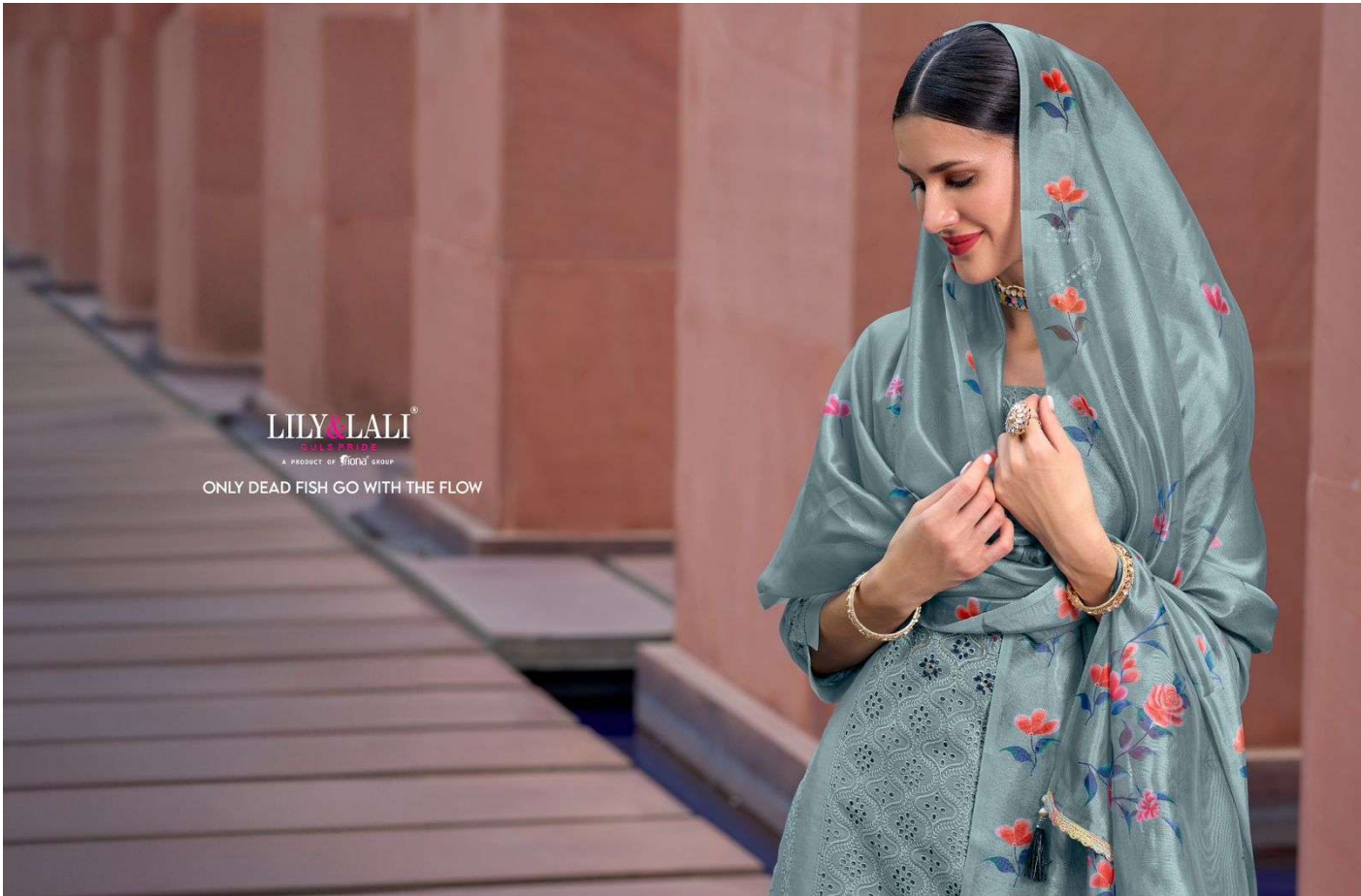


CK - 13902



LILY&LALI[®]
GULS PRIDE
A PRODUCT OF **WIONA** GROUP





LILY & LALI[®]
SILK & COTTON
A PRODUCT OF HONDA GROUP

ONLY DEAD FISH GO WITH THE FLOW



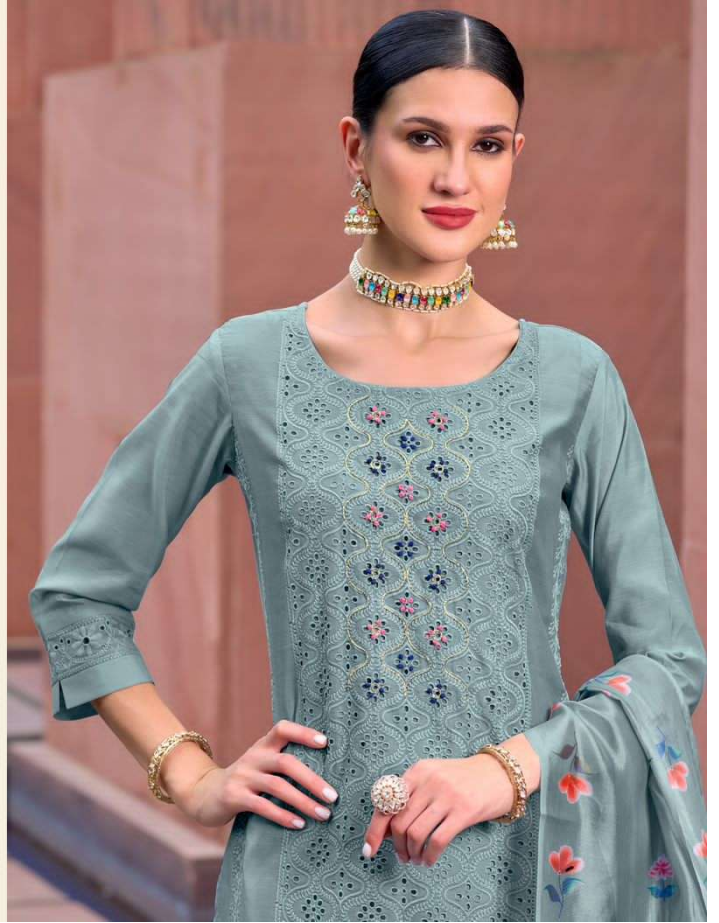


CK - 13903

LILY&LALI®
GULS PRIDE
A PRODUCT OF Friends GROUP



LILY & LALI
A PRODUCT OF FIONA CREOP





AMBIA FILMS 9569200021

LILY & LALI[®] GULSPRIDE A PRODUCT OF **frond** GROUP Chikan Kari Vol-2



LILY & LALI[®]
GULSPRIDE
A PRODUCT OF **frond** GROUP

Corporate office:

A-TOWER, SHOP NO 16, GROUND FLOOR, LANDMARK EMPIRES, SAROLI, SURAT, INDIA-395010

PH: 0281 2845451 - 0281 2843451

Web: www.lilylali.com, Email: info@lilylali.com

FOLLOW US



Complimentary Copy Not For Sale





LILY & LALI

A PRODUCT OF Miana GROUP

DEFENCE IS FOR THE DEFEATED

