



SAYURI[®]
Designer

Bunaai



SAYURI[®]
— Designer



5326





5326



SAYURI[®]
Designer



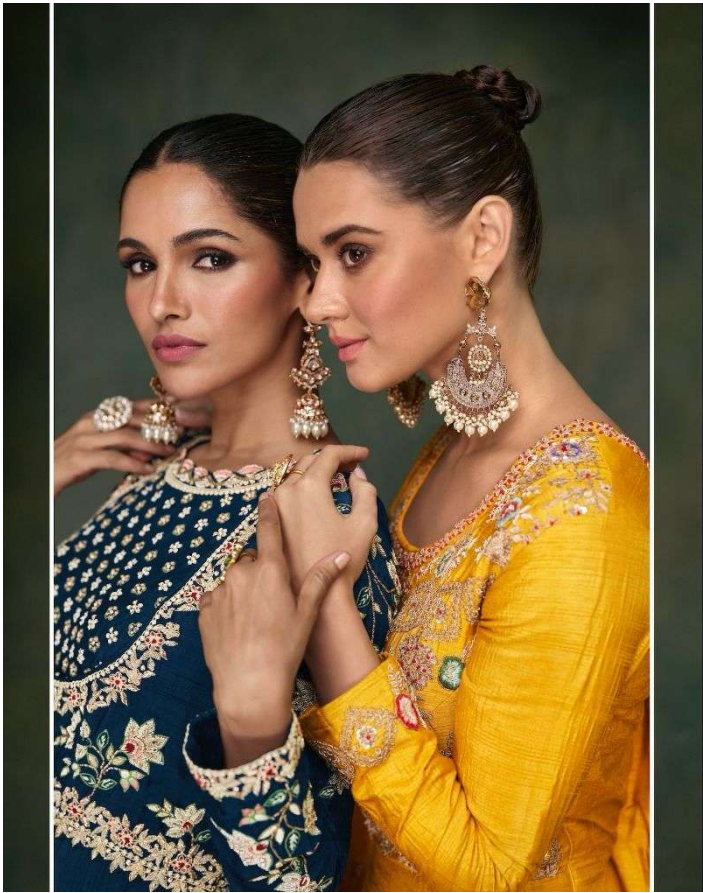
5327



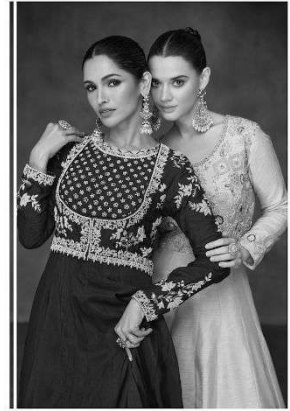



SAYURI®
Designer
Bunaai





SAYURI[®]
Designer



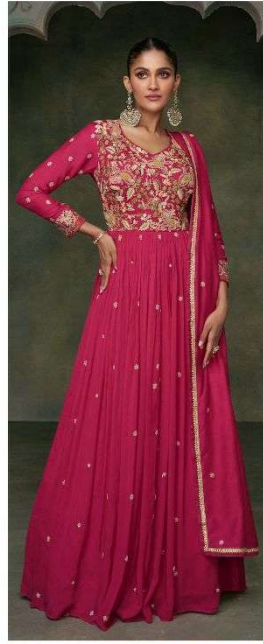
*The key is to contrast two elements so you don't end up over-
doing the feminine quotient*



5326



5327



5328


SAYURI®
—Designer—
Bunaai



SAYURI[®]
Designer

Bunaai

