

 **SWISH**  
INSPIRED BY FASHION

# Festive

*tadka*







## REFINED LUXURY

— sensible colours, excellent designs and romantic mood gives perfect combination of sense and sensibility



## BUZZING BRIGHT

when a person is in fashion. all they do is right

A woman with long dark hair is the central figure, wearing a vibrant green long-sleeved kurta with a subtle floral pattern and a bright yellow dupatta with a green border. She is standing in a courtyard with a stone wall and a fountain in the background. Pink petals are falling all around her, and she has her arms raised in a joyful gesture. The scene is set on a patterned rug with scattered petals.

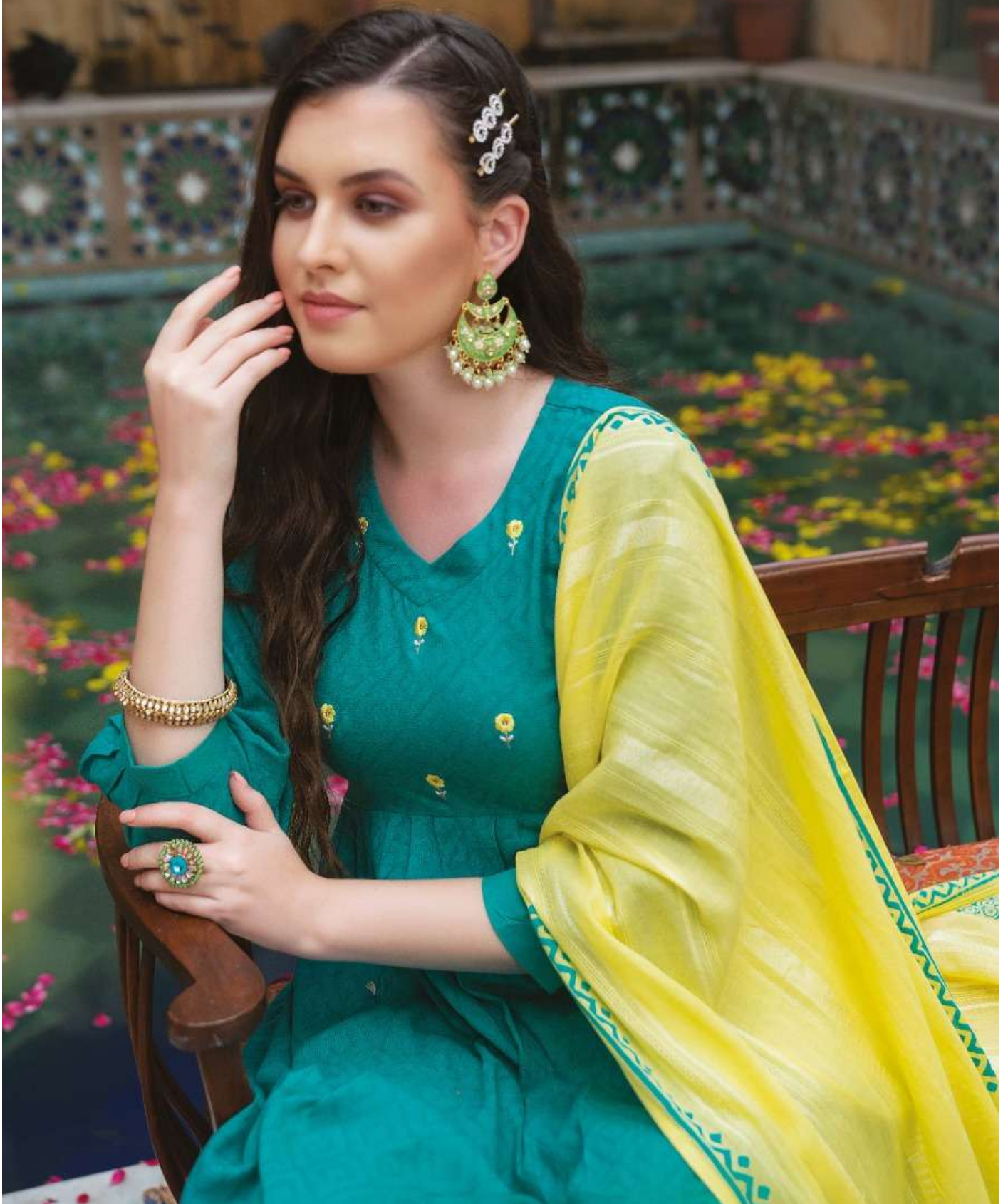
**SWISH**<sup>®</sup>  
INSPIRED BY FASHION

FT 103



MAJESTIC APPEAL

the very silhouette and styling of this outfit provs quite flattering for most body types of renders majestic appea



 **SWISH**  
INSPIRED BY FASHION



FT 104





## GOLDEN MOMENT

the indian traditional fashion is vast and influential throughout the world. it is one of the richest cultures. indian fashion has kept its signature



# GET BEAUTY

perfect and untouched for fashion to come



FT 105



 **SWISH**<sup>®</sup>  
INSPIRED BY FASHION



FT 106

glory of this dress comes from the fact that comes from the fact that it showcase the beauty, modesty and exquisitely





FT 101



FT 102



FT 103



FT 104



FT 105



FT 106



Festive  
tadka

 **SWISH**  
INSPIRED BY FASHION

# Festive

*tadka*

