

FABRIC

Top & Bottom Are Chinon
With Nylon Organza, Dupatta
Is Viscose Organza

VALUE ADDITION

Embroidery with
Heavy Handwork

SIZE

S, M, L, XL, XXL, XXXL

SHICHI
SHAK - 61



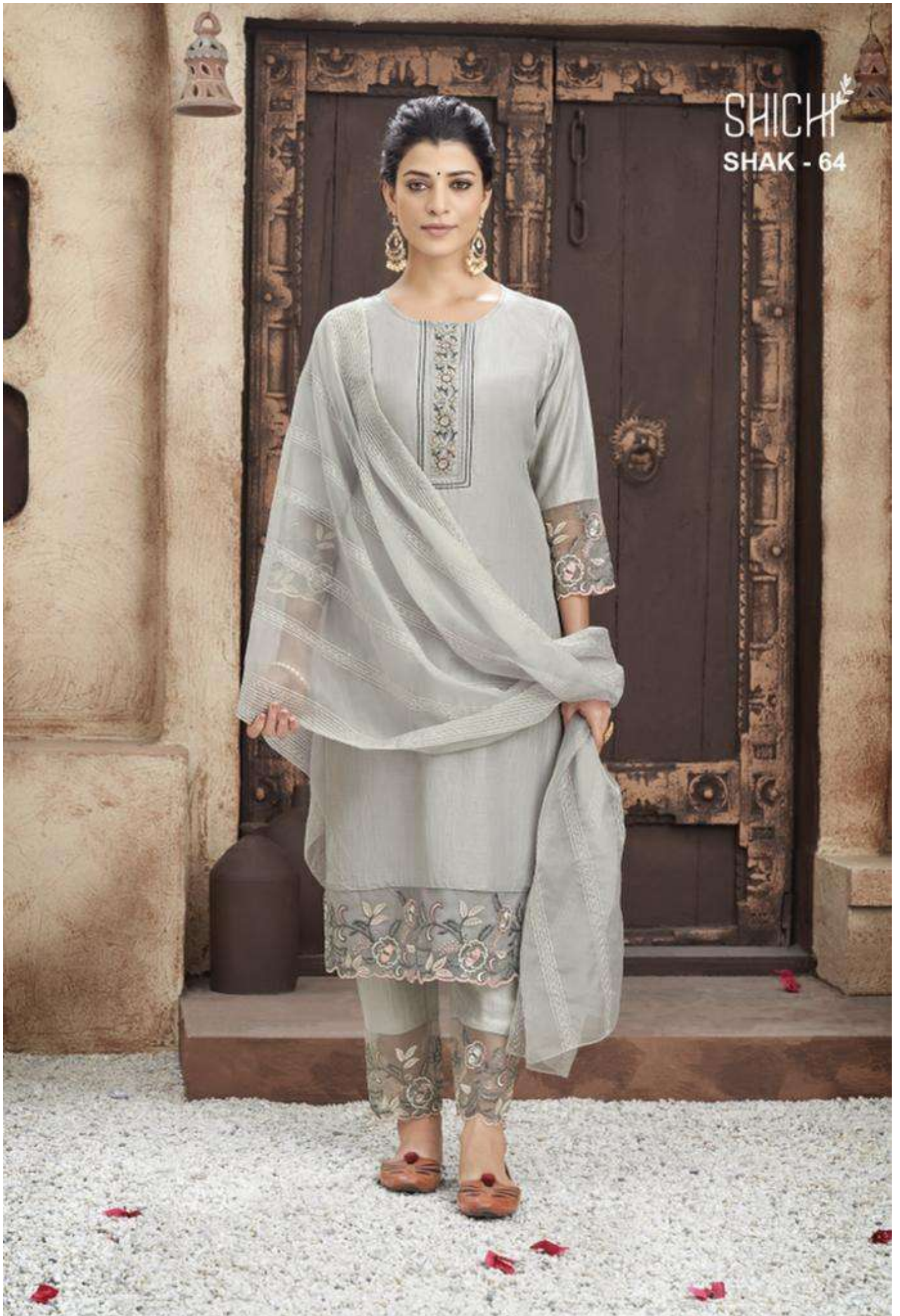
SHICHI
SHAK - 62



SHICH
SHAK - 63



SHICHI
SHAK - 64

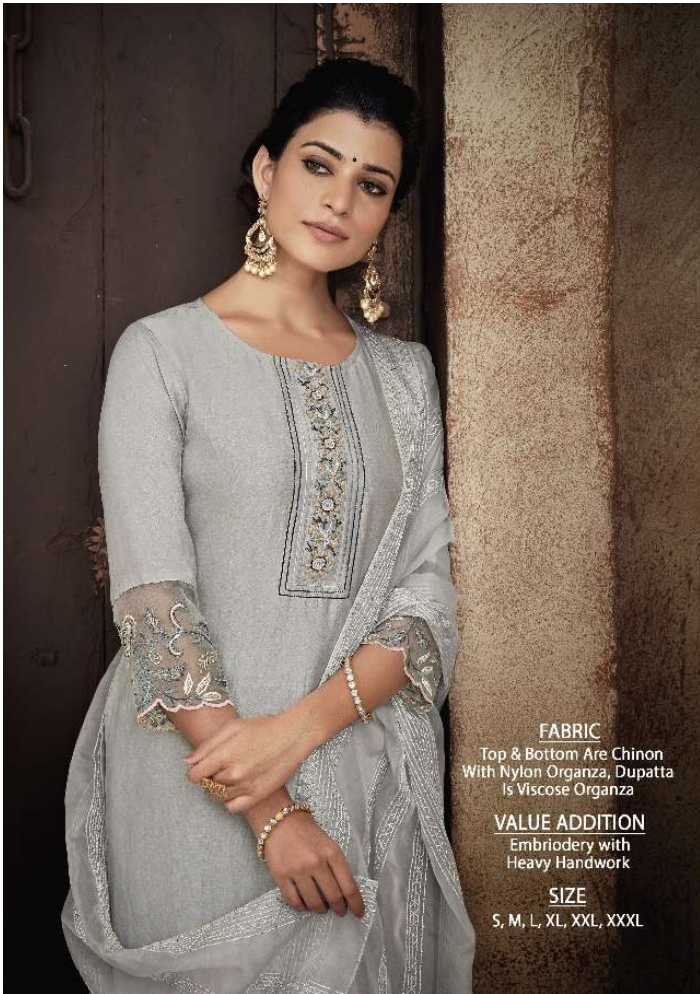


SHICHI
SHAK - 65



SHICH
SHAK - 66





FABRIC
Top & Bottom Are Chinon
With Nylon Organza, Dupatta
Is Viscose Organza

VALUE ADDITION
Embroidery with
Heavy Handwork

SIZE
S, M, L, XL, XXL, XXXL



SHAK - 61



SHAK - 62



SHAK - 63



SHAK - 64

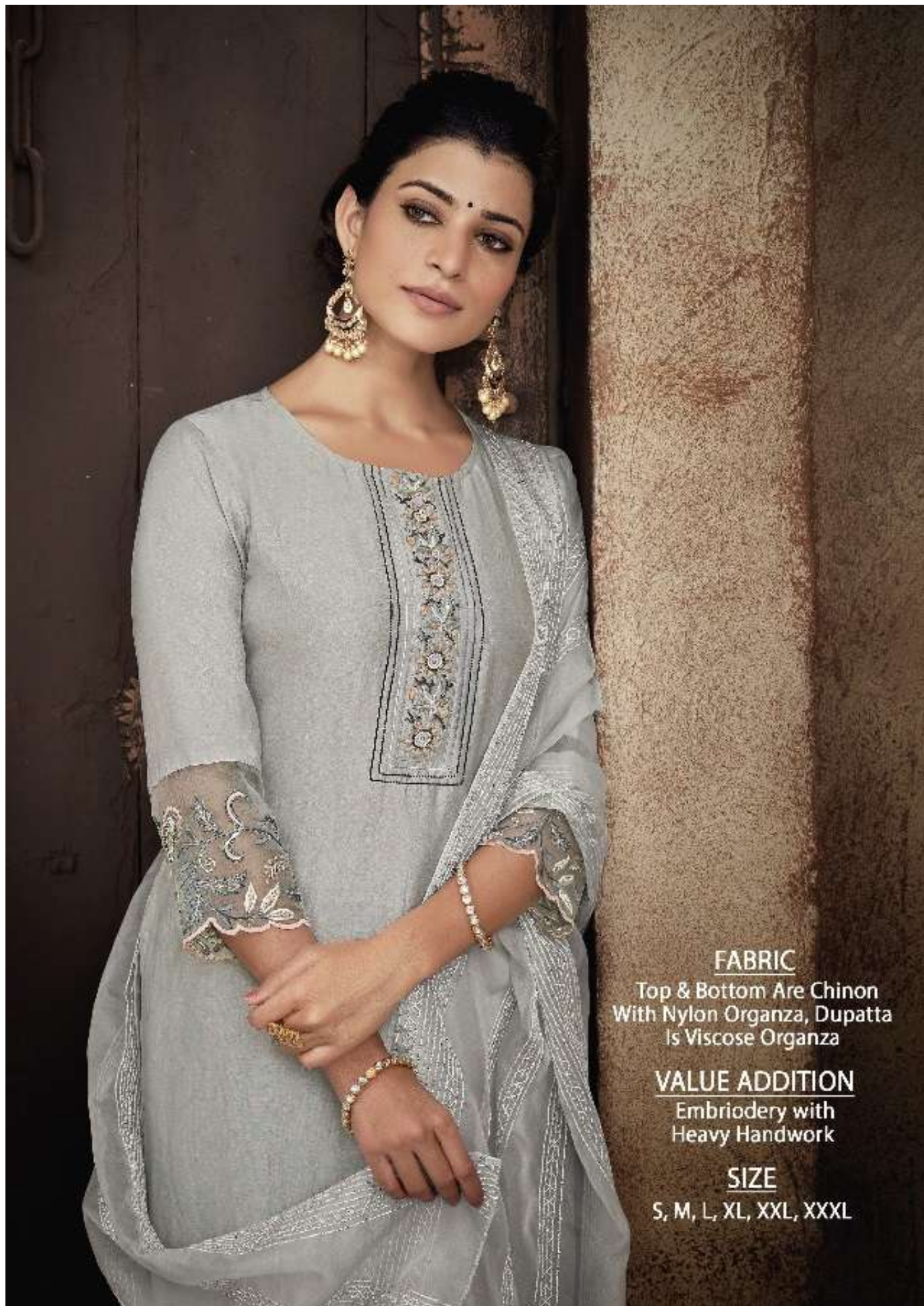


SHAK - 65



SHAK - 66





FABRIC

Top & Bottom Are Chinon
With Nylon Organza, Dupatta
Is Viscose Organza

VALUE ADDITION

Embroidery with
Heavy Handwork

SIZE

S, M, L, XL, XXL, XXXL