



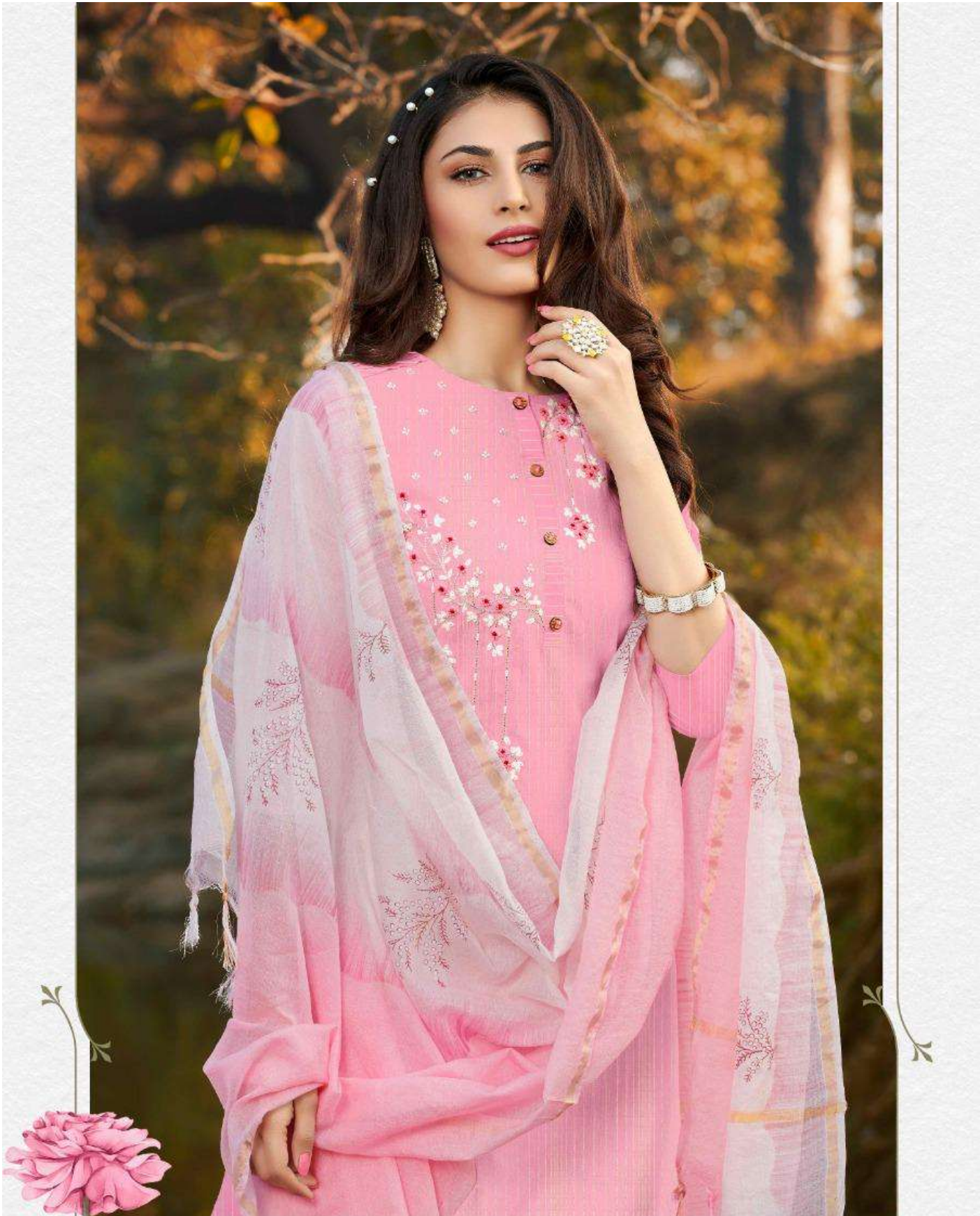
BY  
ANJU FABRICS

# Cotton Crush



BY  
ANJU FABRICS





*Be it your before wedding functions or after engagement party  
this blue dress will be the best companion to treasure your emotions.*

2261





2262 *This bright shade outfit will never fail to make you a stunner; embrace the entire gaze while you walk in to the world wearing this magnificent piece.*

stockout™  
BY  
ANJU FABRICS



*A dark colour palate with light contrast  
is a must-have for your wardrobe. No wonder this dress will lend you a  
mesmerizing look while you head to a party!*



2263



BY  
ANJU FABRICS







stockOUT™  
BY  
ANJU FABRICS



*This pastel green dress is the perfect pick for you if you want to keep everything classy and elegant; fuel your love for ethnic attire with Magdiba! 2264*



2265



BY  
ANJU FABRICS





stockOUT™  
BY  
ANJU FABRICS

*This pastel green dress is the perfect pick for you if you want to keep everything classy and elegant; fuel your love for ethnic attire with Mugdha!*

2266





BY  
ANJU FABRICS



2261



2262



2263



stockOut™  
By  
ANJU FABRICS



2264



2265



2266



BY  
ANJU FABRICS

# Cotton Crush